



KHON KAEN CITY MUNICIPALITY

PROJECT FOR PROMOTING SUSTAINABILITY IN FUTURE CITY OF THAILAND



SFC CONCEPT



SUSTAINABLE FUTURE CITY INITIATIVE (SFCI)

The National Economic and Social Development Board (NESDB) and the Japan International Cooperation Agency (JICA) started The Project for Promoting Sustainability in Future Cities of Thailand (TFCP) in August 2015 to promote sustainable urban development of local cities of Thailand. Together with NESDB and JICA, the TFCP Team established the Sustainable Future City (SFC) development concept and proposed the Sustainable Future City Initiative (SFCI) as a national government-guided and local-government-driven mechanism to realize the SFC. To examine the SFCI, six model cities were selected to prepare their respective SFC plans and implement SFC projects.

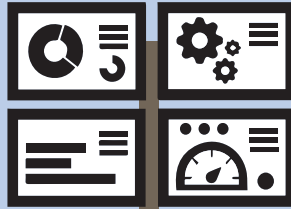


KHON KAEN CITY MUNICIPALITY

Khon Kaen City Municipality is located in the center of northeastern Thailand, the region generally known as Isan. The city lies at the intersection of the GMS East-West and North-South Economic Corridors, making it the transportation and logistics hub in the region. In 2015, Khon Kaen City had a population of 118,262 within an area of about 46 sq km.

As urban area has expanded beyond this administrative boundary, in the Khon Kaen urban area of about 280 sq km, some 256,000 people live. This area is surrounded by National Highway 230, a circular bypass, which is located 10 km from the city center.

SUSTAINABILITY ASSESSMENT



Presence of a variety of higher-education institutions and medical centers, providing many learning and job opportunities for young people.

01

02

As a GMS subcenter, Khon Kaen can attract white-collar industries to locate in its expanded urban area



As CBD of Khon Kaen province, it has high priority in terms of improving the urban public transportation network.

03

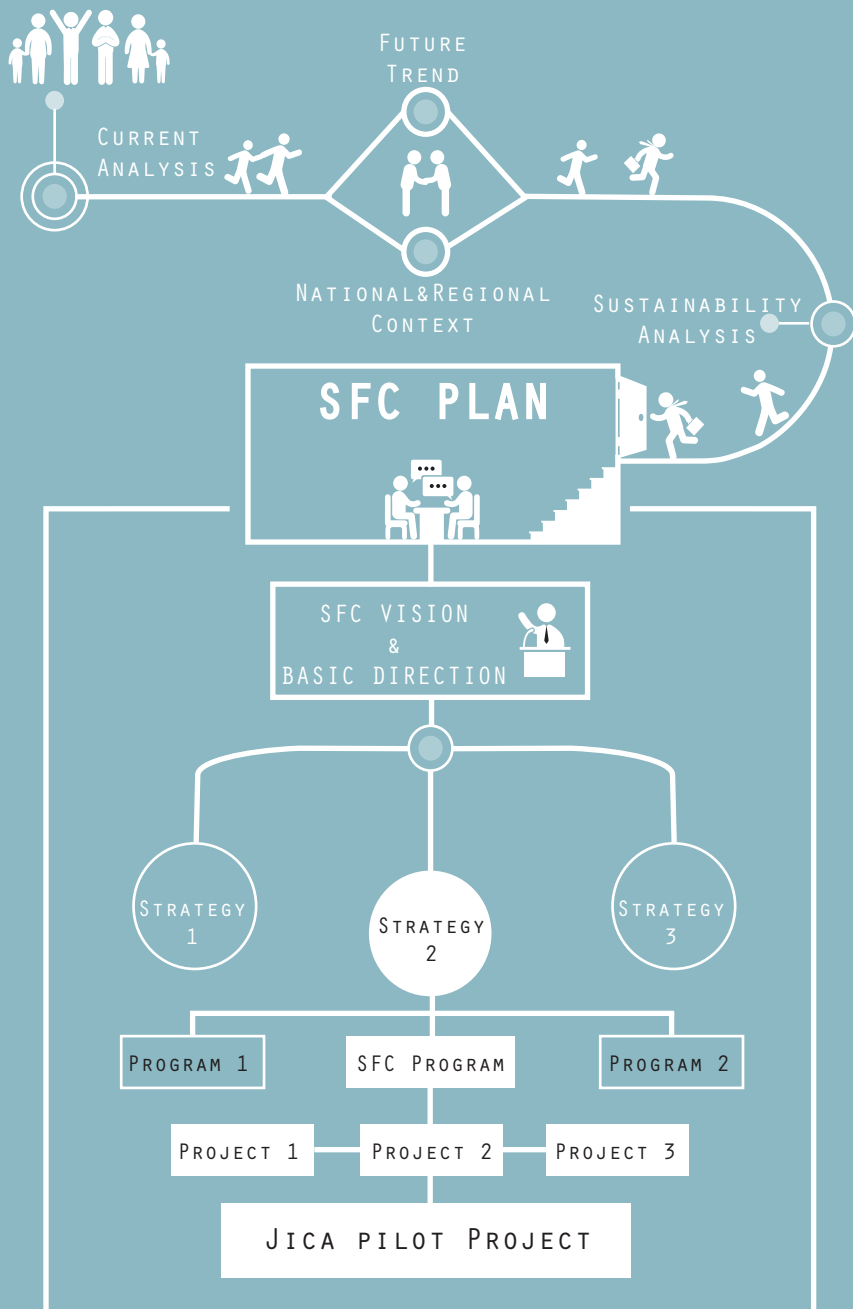
04

Stable economy with service and manufacturing industries.



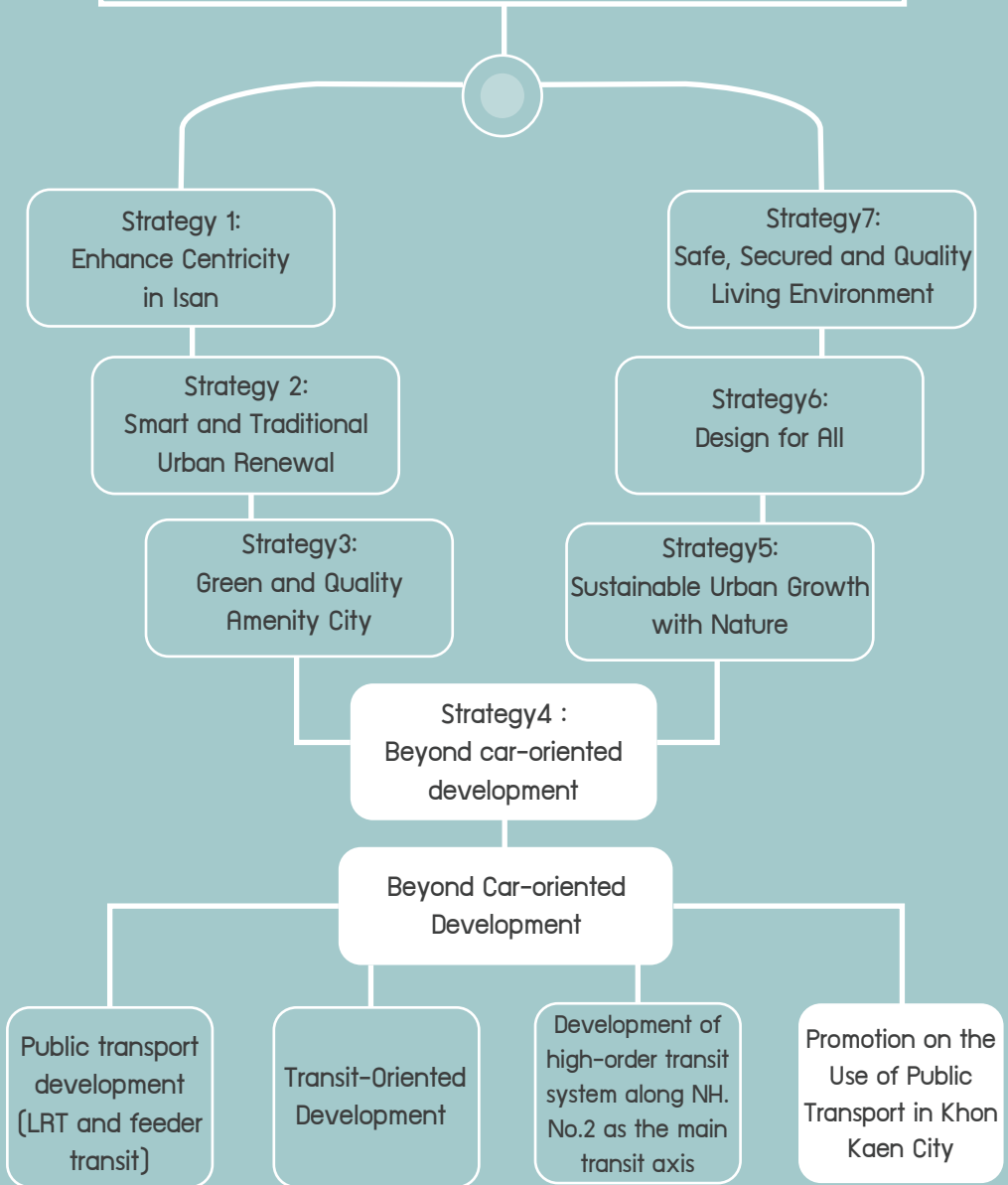
SFCI IMPLEMENTATION FRAMEWORK

Start _ _ _ _ _



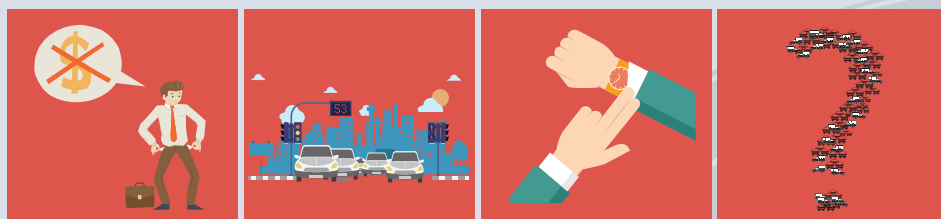
SFC PLAN

MAKE THE CITY TO BE GLOBAL,
CREATE THE SOCIETY
TO BE "HAPPY AND SMART CITY"

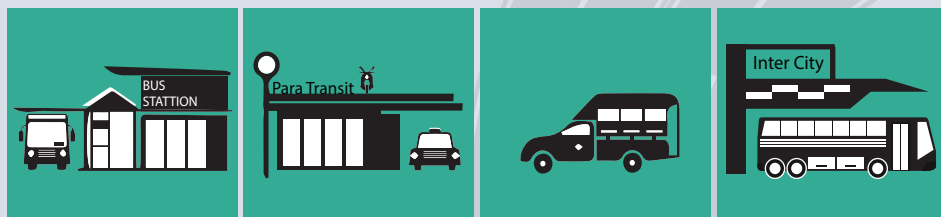


JICA PILOT PROJECT

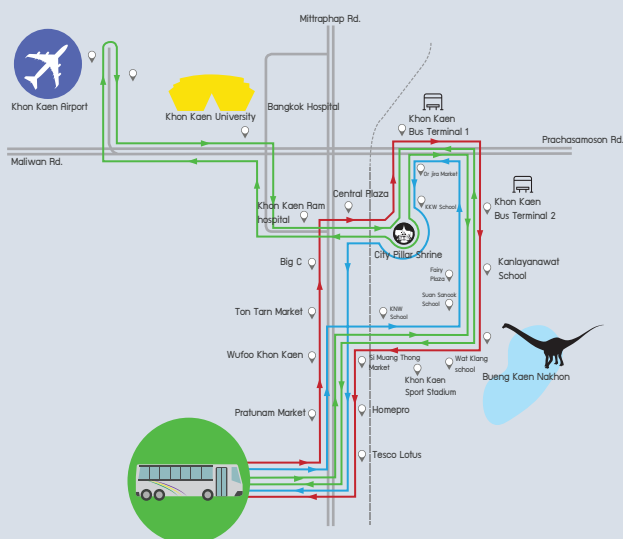
Promotion on the Use of Public Transport in Khon Kaen City



ALTERNATIVES



Example: Bus Route



OUTCOME AND IMPACT

Expected output of SFC Program



- Higher number of public transportation passengers
- Reduce barriers in shifting from private to public transport
- Increased mobility among the elderly
- Less air pollutants within the city resulting from reduced private car use.

Long-term impact of SFC plan

- Shift beyond car-oriented development and from private to public transportation
- To become a model for other cities in terms of comprehensive public transportation planning and implementation
- To make citizens feel closer and familiar to public transportation



The Project for Promoting Sustainability in Future Cities of Thailand



Project office
Office of the National Economic and
Social Development Board [NESDB]
Email: tfcp.mail@gmail.com
Tel: +66-2-628-2879

Khon Kaen City Municipality
Tel: 043-221202
website: www.kkmuni.go.th